

## Product description

Human alpha synuclein (SYUA) is a presynaptic neuronal protein linked genetically and neuropathologically to Parkinson's disease.

**Synonyms:** Non-A beta component of Alzheimer's disease amyloid



**Product name** Synuclein alpha



**Catalog number** SY865400

**Uniprot ID** P37840

## Protein sequence

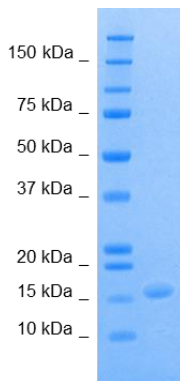
MDVFMKGLSKAKEGVVAAAEEKTKQGVAAEAGKTKEGVLYVGSKTKEGVVHGVATVAEKTKEQVTNVGGAVVTGVTAVAQKTVEGAGSIAA  
ATGFVKKDKLQKNEEGAPQEGILEDMPVDPDNEAYEMPSEEGYQDYPEEA

## Product features and protocols



Purity

>95%  
as determined by SDS-PAGE



SDS-PAGE gel analysis of SYUA protein in Reducing/Heated conditions (RH) and stained with Coomassie blue.

## Other features

Predicted MW	14.5 kDa
Expression System	<i>E. coli</i>
Purification Tag	No tag
Protein content	Determined by BCA assay with BSA as standard
Formulation	Lyophilized from 50 mM Tris ; 100 mM NaCl pH 8.0 buffer

## Product preparation

For product preparation we recommend the following steps:

1. Briefly centrifuge the tube before opening
2. Reconstitute by adding the appropriate volume of ultrapure water for a final concentration of 200 µg/ml (e.g. 50 µl for 10 µg or 250 µl for 50 µg conditioning)
3. Vortex gently to insure complete dissolution
4. Wait 15 minutes at room temperature before proceeding further
5. Vortex gently again and centrifuge **briefly**

## Product storage

The product is lyophilized and shipped at room temperature. **Store at -80 °C upon receipt.**

After reconstitution, the protein can be preserved at 4°C for a few weeks.

### Avoid multiple freeze-thaw cycles



**The product is intended for research use only. Not for diagnostic or therapeutic use.**