

Product description



Product name Human Neurofilament light polypeptide

Neurofilament light chain (NFL) is one of the components of the neurofilaments, supramolecular structures found in the cytoplasm of the neurons.



Catalog number NF169530

Uniprot ID P07196

Synonyms: Neurofilament triplet L protein

Protein sequence

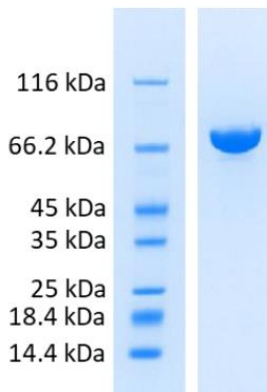
MSSFSYEPYYSTSYKRRYVETPRVHISSVRSYGSTARSAYSSYSAPVSSSLSVRRSYSSSSGSLMPLENLDLSQVAAISNDLKSIRTQEKAQLQDLN DRFASFIERVHELEQQNKVLEALLVLRQKHSEPSRFRALYEQIIRDLRLAAEDATNEKQALQGEREGLEETLRNLQARYEEVLSREDAEGRML EARKGADEAALARAELEKRIDSLMDEISFLKKVHEEEIAELQAIQYQISVEMDVTKPDLAALKDIRAQYEKLAAKNMQNAEEWFKSRFTVL TESAAKNTDAVRAAKDEVSESRLLKAKTLEIEACRGMNEALEKQLQELEDKQNADISAMQDTINKLENELRTTKSEMARYLKEYQDLLNVKM ALDIEIAAYRKLLGEETRLSFTSVGSITSQSSQVFRSAYGGLQTSSYLMSTRSFPSSYTTSHVQEEQIEVEETIEAAKAAEKDEPPSEGEAE EEKDKKEAEAAAAEEEEAAKEESEEAKEEEEEGGEGEGEETKEAEKKVEGAGEEQAAKKKD

Product features and protocols



Purity

>95%
as determined by SDS-PAGE



SDS-PAGE gel analysis of NFL protein in Reducing/Heated conditions (RH) and stained with Coomassie blue.

Other features

Predicted MW	61.5 kDa
Expression System	<i>E. coli</i>
Purification Tag	No tag
Protein content	Quantitation is carried out by Bradford protein assay using BSA as standard.
Formulation	Liquid - 50 mM Sodium Phosphate pH 7.0 buffer with 1 mM DTT

Product preparation

For product preparation we recommend the following steps:

1. Thaw in ice
2. Vortex gently
3. Centrifuge briefly before opening

Product storage

The product is liquid and shipped with dry ice.

Store at -80 °C upon receipt.

Once thawed, the protein can be preserved at 4°C for a few weeks.

Avoid multiple freeze-thaw cycles



The product is intended for research use only. Not for diagnostic or therapeutic use.